

GBS SERIES

UNCASED CEILING MOUNT HYDRONIC HEAT DX COIL AIR HANDLER

Product Dimensions & Specifications



WARRANTY

One year limited parts warranty

OPTIONS

See options menu

MANUFACTURED IN THE USA

Representative image only.
Some models may vary in appearance.
Due to continuous product improvement,
specifications are subject to change
without notice.



Rev. Date: 06/17/21

© 2021 AirMark

STANDARD FEATURES

- Factory installed service switch
- Factory installed freeze protection
- Rifled copper tube/enhanced aluminum fins DX and hydronic coils for more efficient heat transfer
- Schrader valve on DX and hydronic coils for "hiss-test" leak check
- Low leak cabinet design*

APPLICATION VERSATILITY

Built-in mounting tabs for ceiling or furdawn mounting. Compatible with most brands of air conditioners and heat pumps. Optional louvered ceiling access panel has separate frame that attached to ceiling joists. Optional solid ceiling panel available for use with ducted return. Less than 2% air leakage (* when tested in accordance with ASHRAE standard 193 and AirMark installation instructions.)

MOTOR

Direct drive blowers circulate air quietly and efficiently. Multiple speeds allow for precise air volume selection. Air moving system is plated mounted to allow for easy removal and service.

ELECTRONIC CONTROLS

Electronic board controls the functioning of system, increasing system reliability. Standard factory in-

stalled freeze stat wired into circulating pump control circuit. Standard factory installed fan time delay relay for increased efficiency and maximize capacity. Standard factory installed pump cycle timer circulates hot water every four hours to prevent coil freeze during off-cycle.

DX/HYDRONIC COILS

High efficiency rifled copper tube and enhanced aluminum fins provide maximum heat transfer. All coils are immersion tested at 500 PSI and nitrogen charged for maximum reliability. Schrader valve allows for "hiss-test" pre-installation pressure test. Available with factory installed orifice or TXV. Primary and secondary DX condensate drain with 3/4" NPT connections. Powder-painted galvanized drain pan. Certified for use with R22 or R410A. Lead free construction. Hydronic coils suitable for potable water applications.

LOW LEAKAGE

Less than 2% air leakage from cabinet when installed in enclosure and tested in accordance with ASHRAE 193. Unit must be installed in accordance with AirMark installation instructions. Sturdy, fully insulated galvanized enclosure with ducted return available as option.



HEATING AND COOLING PERFORMANCE & ELECTRICAL DATA

MODEL	PERFORMANCE DATA						ELECTRICAL DATA	
	NOMINAL COOLING (BTUS)	HEATING GPM	PRESS. DROP (FT. WTR)	BTU (1000) AT ENTERING WATER TEMPERATURE °F			MINIMUM CIRCUIT AMPACITY (MCA)	MAX BREAKER OR FUSE SIZE
				120	140	180		
GBS 18	18,000	1	0.7	10.3	14.4	22.6	3.75	15
		2	2.0	12.0	16.8	26.4		
		3	3.3	12.9	18.0	28.3		
GBS 19/24	24,000	2	2.1	14.7	20.6	32.4	3.75	15
		3	4.1	15.9	22.2	34.9		
		4	6.6	16.5	23.1	36.3		
GBS 25	24,000	2	2.2	15.7	22.0	34.6	5.38	15
		3	4.3	17.0	23.8	37.4		
		4	6.8	17.6	24.7	38.8		
GBS 30	30,000	2	2.2	17.3	24.2	38.0	6.38	15
		3	4.3	18.8	26.3	41.3		
		4	6.8	19.6	27.5	43.2		
GBS 31/36	36,000	2	2.8	19.7	27.6	43.4	6.38	15
		3	5.4	21.7	30.4	47.8		
		4	8.5	22.8	31.9	50.1		

NOTES: Heat BTUH is at 70 degree EAT. 120 degree and 180 degree data is supplied for boiler applications. Heat BTUH output will not exceed output of water heater.

BLOWER DATA

MODEL	SPEED TAP	AMP	VOLT	HP	CFM VS. STATIC PRESSURE				
					0.1	0.2	0.3	0.4	0.5
GBS 18	HIGH	2.5	120	1/4	820	750	685	615	540
	LOW				715	670	610	555	460
GBS 19/24	HIGH	2.5		1/4	890	825	755	675	605
	LOW				765	715	665	605	520
GBS 25	HIGH	3.8		1/3	975	900	830	745	680
	LOW				900	840	770	690	620
GBS 30	HIGH	2.3		1/5 (2)	1055	965	865	755	605
	LOW				1015	915	815	705	565
GBS 31/36	HIGH	2.3		1/5 (2)	1235	1150	1040	925	830
	LOW				1050	980	900	800	680

Units should not be applied to a system with less than 350 CFM/Ton airflow.

Add 0.05 static when enclosure and/or ceiling panel are used.

GBS 30, GBS31 and GBS 36 have two motors and four blowers.

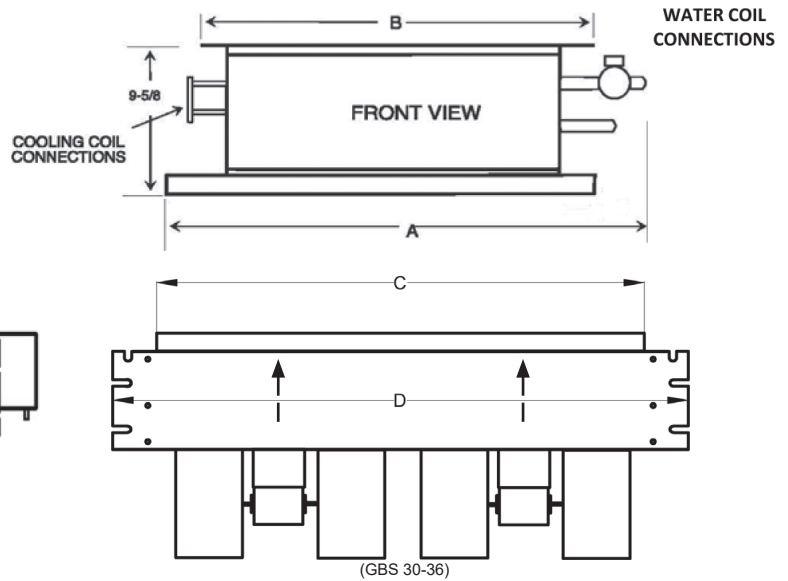
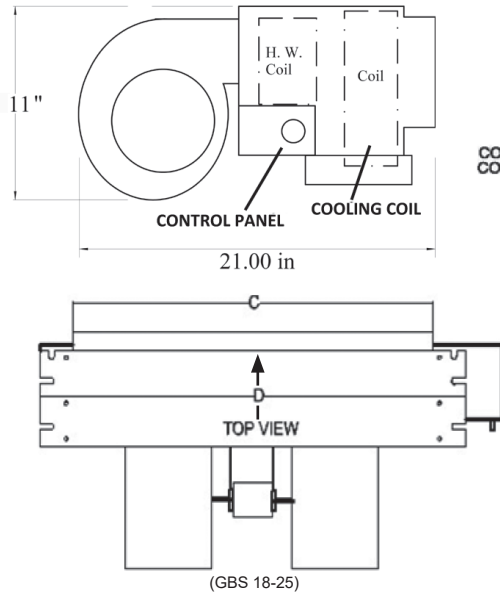
AIR HANDLER CHASSIS NOMENCLATURE

G	B	S	18	G	-001
AirMark Air Handler	Voltage B = 120V PSC Motor	Configuration S = Uncased Ceiling Mount	Nominal Tonnage (KBTUH)	<u>Metering Device</u> 4 = R410A non-bleed A/C or H/P TXV 6 = R410A 20% bleed A/C or H/P TXV B = R22 20% bleed A/C or H/P TXV F = R22 Flo-rater G = R410A Flo-rater X = R22 non-bleed A/C or H/P TXV	Option Code

HYDRONIC HEAT KIT NOMENCLATURE

Z	T	2	S	P
Water Heat Hydronic	Terminal Block	2 = 2 Row Hydronic Coil	GBS 18 - X GBS 19/24 - S GBS - 25/30 - M GBS 31/36 - L	P = Taco 006 Bronze Pump 8 = Taco 008 Bronze Pump L = Less Pump

PHYSICAL DIMENSIONS						
UNIT MODEL	A"	B"	C"	D"	Weight (lbs)	Skid Qty.
GBS 18	42	37	30	37	82	8
GBS 19-24	48	43	36	43	93	8
GBS 25	55	50	42	50	101	8
GBS 30	55	50	42	50	121	8
GBS 31-36	62	56	48	56	127	8



Copper stub out diameter: DX - Suction: 3/4", Liquid: 3/8";
Hydronic – Water In/Out: 7/8"

Access Door

VERSATILITY

Equipped with hidden frame feature. Fastens to the outside wall surface and does not have to perfectly match the hole opening. Frame screws are not visible after installation. Available in either solid (S) or louvered (L) style.

MATERIALS

Galvanized steel construction with smooth powder paint finish.

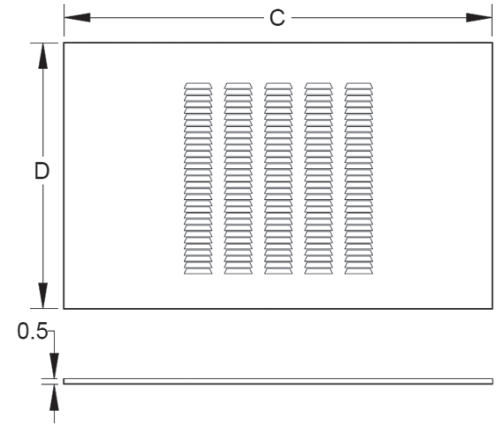
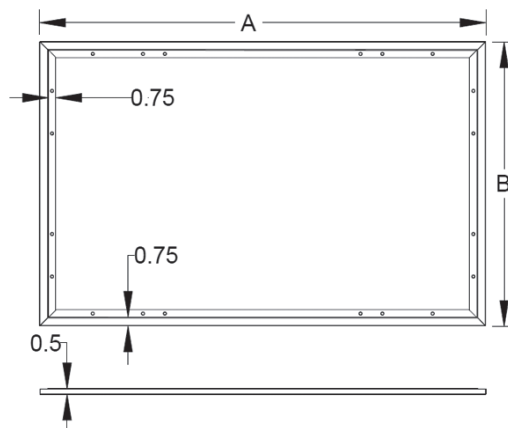
FILTER

20" x 20" x 1" field supplied.

WARRANTY

One-year limited parts warranty.

ACCESS DOOR DIMENSIONS						
FOR USE WITH	PANEL MODEL	GBS ACCESS DOOR AND FRAME				FILTERS (QTY)
		A"	B"	C"	D"	
GBS 18	GAD-7(S/L)	49 1/2	27 1/2	47 1/2	26	1
GBS 19/24	GAD-3(S/L)	55 1/2	27 1/2	53 1/2	26	1
GBS 25/30	GAD-6(S/L)	63-1/2	27 1/2	61-1/2	26	2
GBS 31/36	GAD-4(S/L)	70-1/2	27 1/2	68-1/2	26	2



373 Atascocita Rd
Humble, TX 77396
Phone 800.423.9007
Fax 281.441.6510
www.airmark-ac.com

WARNING
Cancer and
Reproductive Harm
www.P65Warnings.ca.gov